

Piccaninnie Ponds Snorkel

The spring fed sinkhole and cave system is a stunning snorkelling landscape. In crystal clear water snorkellers can look around the 10m deep sinkhole and hover over the 100m deep Chasm.

LOCATION

Port MacDonnell,
South Australia

DEPTH

10-100 Meters

TEMP

12-14°

FEATURE

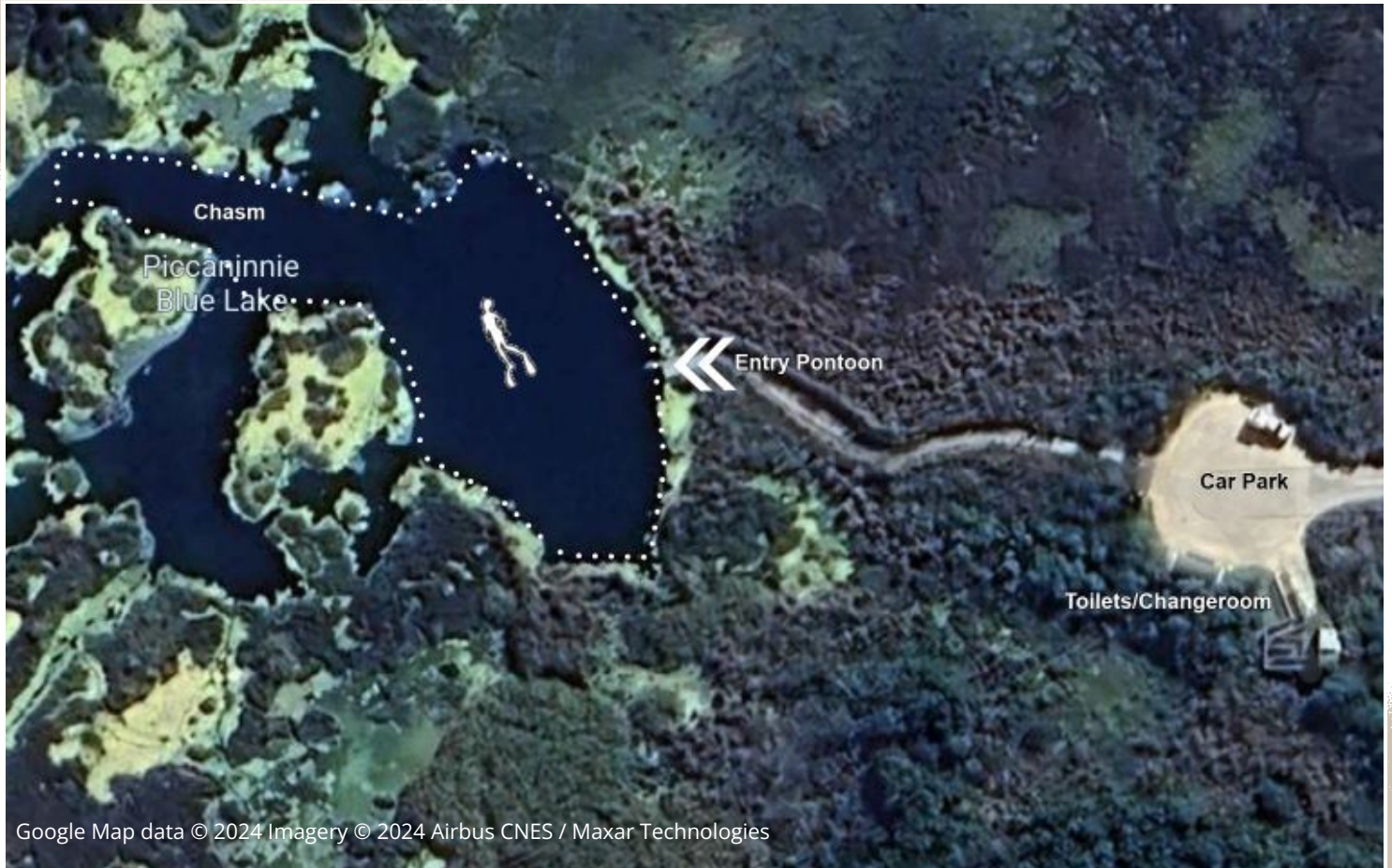


DIFFICULTY

Medium - It's deep so you won't be able to stand up and it's cold

VISIBILITY

Up to 40 meters



Google Map data © 2024 Imagery © 2024 Airbus CNES / Maxar Technologies

GETTING THERE

Piccaninnie Ponds are 30 minutes from Mount Gambier in the southeast of South Australia. Mount Gambier is 435km from Adelaide and 421km from Melbourne.

Follow the turn off onto Piccaninnie Ponds Road and look for the turn off to the carpark.

LOOK FOR

- Freshwater Fish
- Freshwater Eels
- Long Necked Tortoises
- Spotted Galaxias
- Crayfish

BEST TIME TO SNORKEL

Because there are no tides or currents to worry about here, any time is a good time to snorkel at Piccaninnie Ponds. The water temperature is always cold – between 12 and 14 degrees – so it doesn't matter what time of the year you snorkel either. If you can pick a sunny day, the underwater landscape will look a bit brighter.